

# Heart of Greenstead

MOVING FORWARD WITH YOU

## WHAT IS HEART OF GREENSTEAD?

An exciting project that will see major investment in the Greenstead area, helping to make it a better place to live and work. The scheme is a key part of the £18.2 million Town Deal funding given to Colchester in 2022.

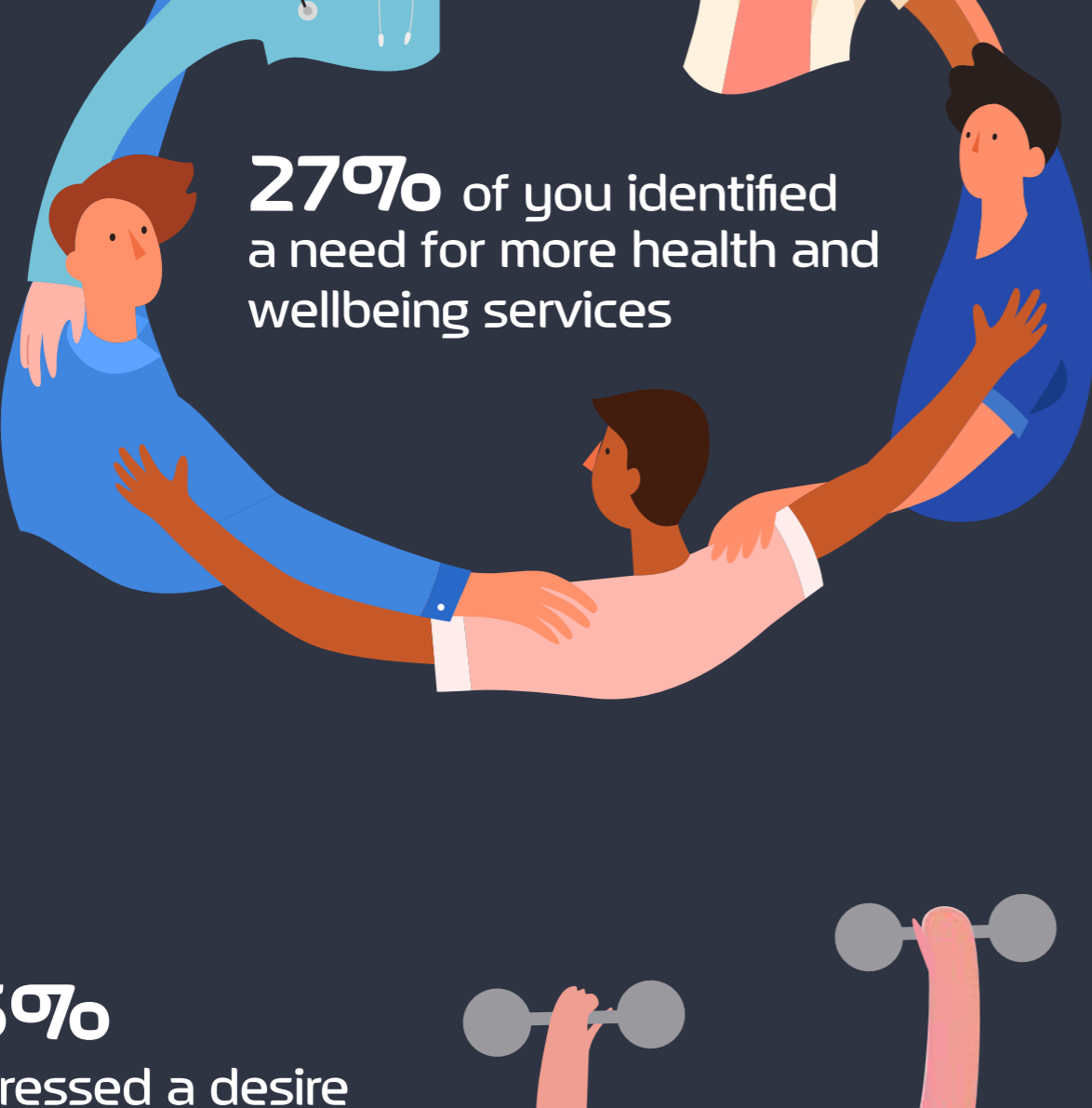
## Heart of Greenstead Multi-use Community Hub Survey Results

### About the Survey

As part of the phase one engagement plan for the Heart of Greenstead project, Community360 collaborated with Colchester City Council and NHS Suffolk and North East Essex Integrated Care Board to survey community members regarding what spaces, services and design principles they would like to see within the new multi-use community hub.

Thank you to everyone who took part. This will help the architectural team to better understand the interests, needs and priorities of the community

### Key Survey results:



A cafe, indoor sports hall and a reception area are among the most desired spaces in the new building



**30%** of residents prioritised mental health services



Many residents would like to see a garden area, play area and seating space included in the new community hub

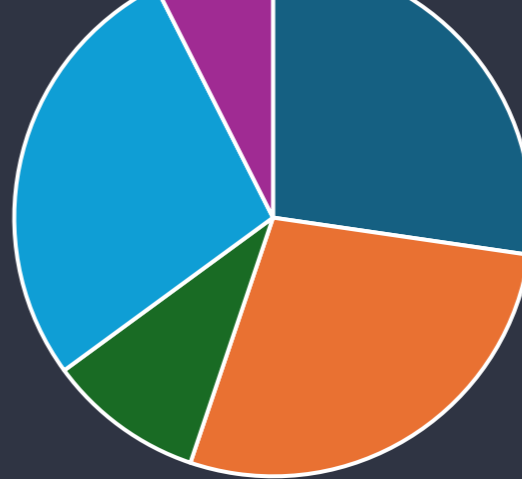
The most requested improvement to the GP surgery is an increased number of appointments



### The Results

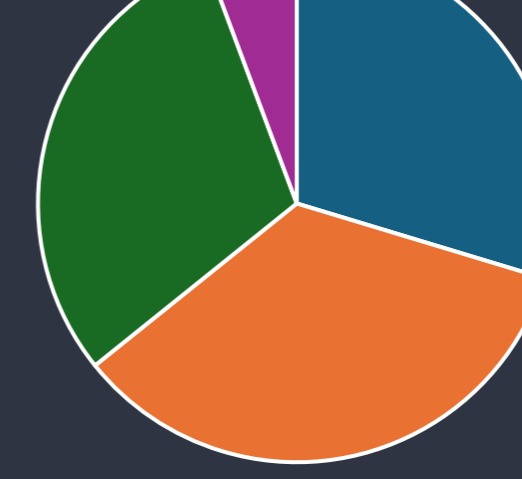
Do you feel there are any services/facilities missing from Greenstead?

Health and wellbeing services	95
Sports facilities	97
Signposting services	34
Youth programmes	96
Other	26

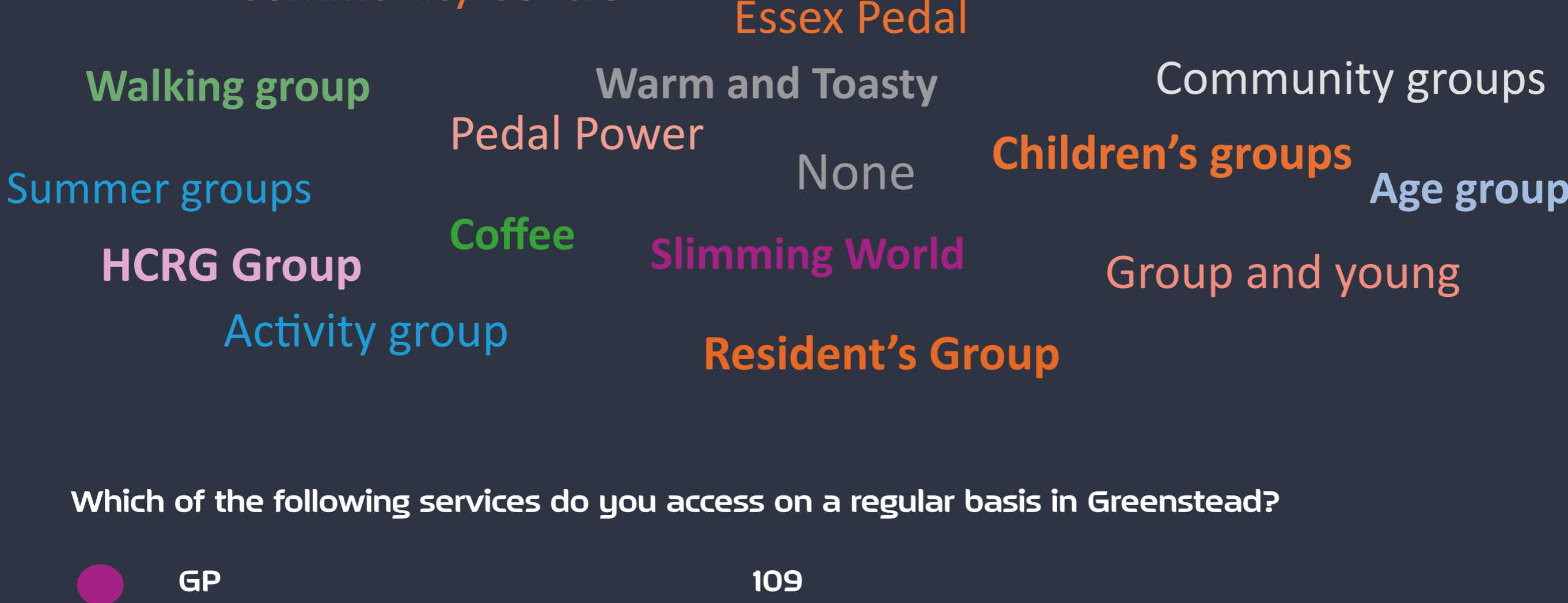


Are there any health, wellbeing, or supplementary services that you need to access in order to take charge of your health and wellbeing?

Mental health services	73
Physical activity groups	85
Signposting services	74
Other	14

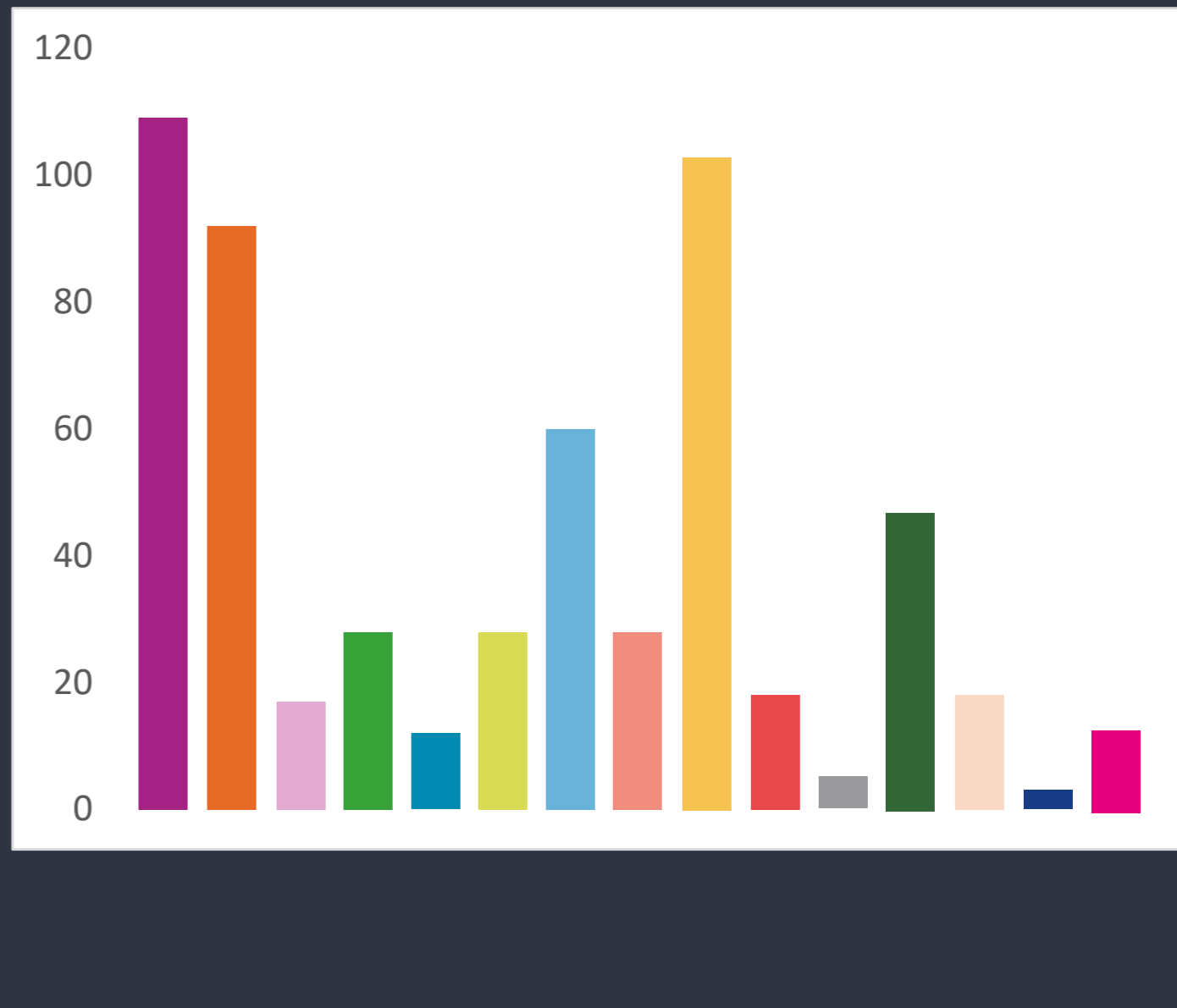


What community groups or activities (if any) do you access within the Greenstead Community Centre?



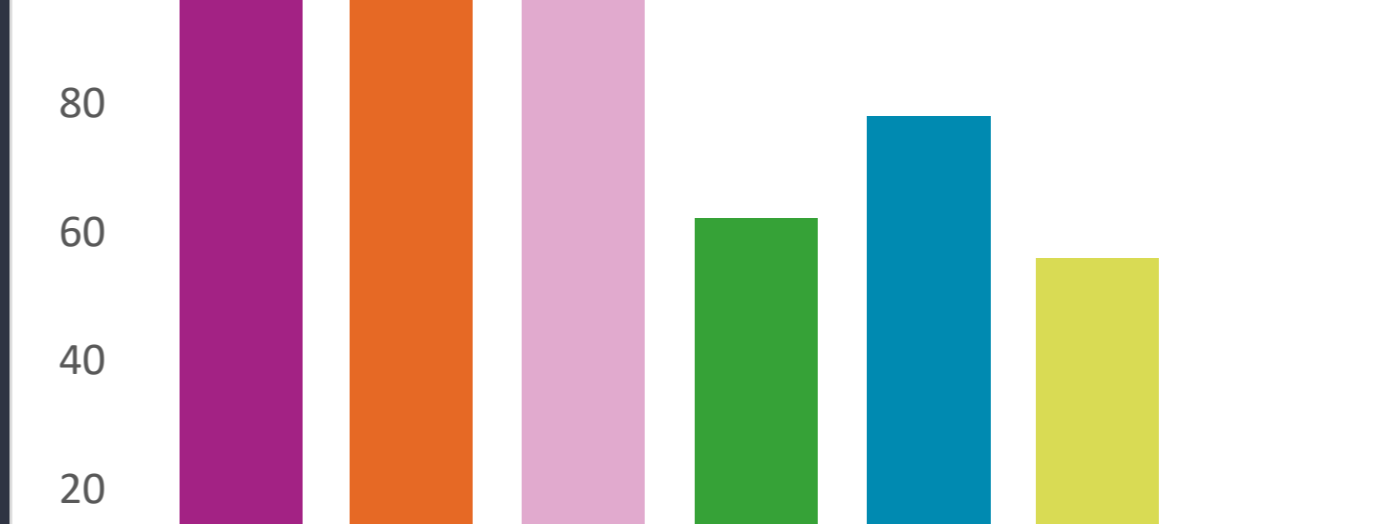
Which of the following services do you access on a regular basis in Greenstead?

GP	109
Library	92
Family Support Service	17
Greenstead Local Housing Office	28
Sports/fitness facilities	12
Community groups/spaces	28
School	60
Nursery/pre-school	28
Pharmacy	103
Mental health services	18
Employment services	5
Food Bank	47
None of the above	18
All of the above	3
Other	13



What type of green space would you like to see incorporated into the design of the new multi-use community hub?

Play area	95
Seating space	113
Garden area (including flower bed)	117
Walkways	58
Outdoor exercise area	74
Allotment	52
Other	8



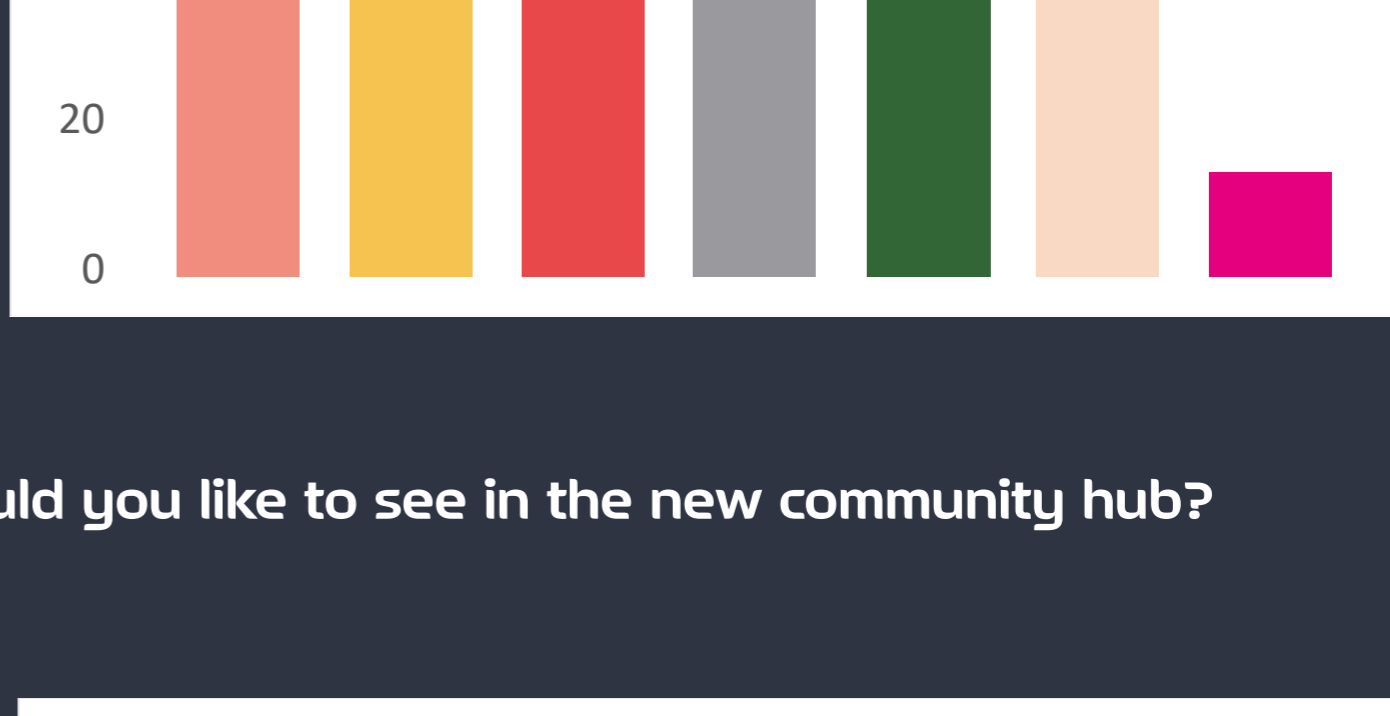
What spaces would you like to see in the new building?

Office/training rooms	61
Reception area	100
Main hall with indoor sports facilities	99
Cafes	111
Multi-faith centre	50
Community growing scheme	78
Other	14



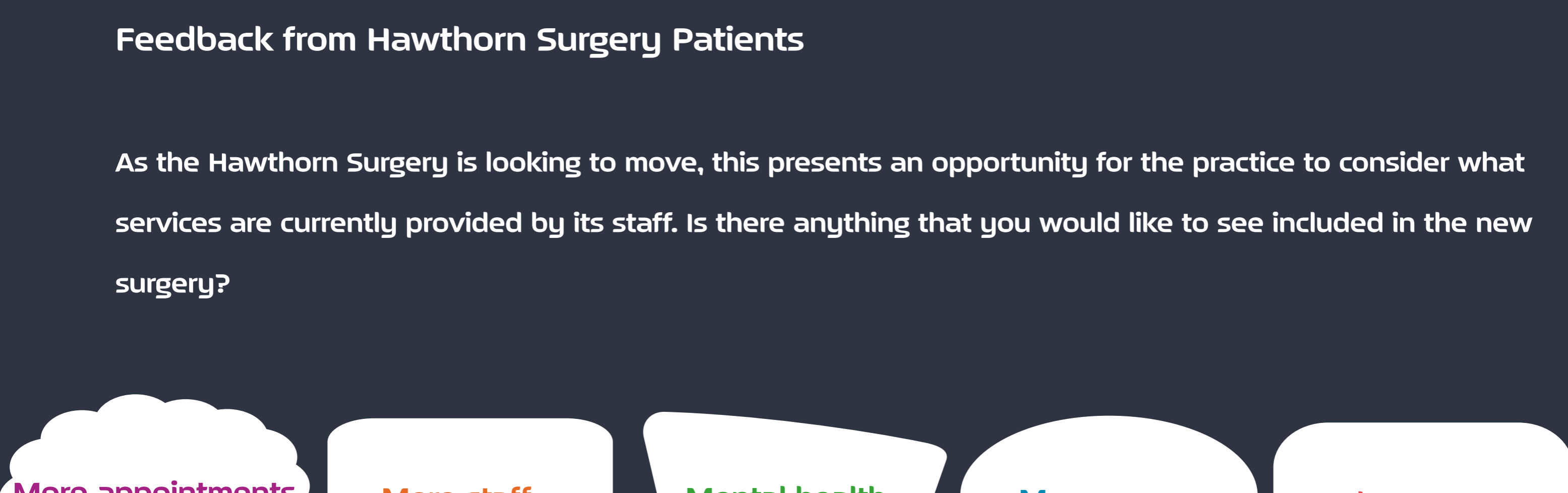
What environmentally sustainability measures would you like to see in the new community hub?

Solar panels	61
Low energy lighting	100
Designated bin area	99
Donation booth for clothes, shoes etc	111
Green roof/living wall	50
Rainwater harvesting	78
Other	14



### Feedback from Hawthorn Surgery Patients

As the Hawthorn Surgery is looking to move, this presents an opportunity for the practice to consider what services are currently provided by its staff. Is there anything that you would like to see included in the new surgery?



What top three things about the service you currently receive at the surgery would you like to see improve?

1 2 3

- » More appointments
- » Appointments at different times
- » Mental health services

What is the one thing the practice could do to improve your overall experience at the surgery?

More appointments/appointments at different times

Please note: The Heart of Greenstead funding does not include funding for more GPs at the new surgery. The move will create a bigger surgery where additional services may be brought in.

### Service Recommendations

- » Dedicated and accessible in-house mental health services, supporting both common and more complex mental health issues.
- » Physical activity groups for all ages, including low-intensity exercise for older people and dedicated youth programs.
- » Youth services, groups, and advice for young people.
- » A regular police presence or drop-in within the hub.
- » Signposting services.
- » The continuation of many of the existing groups that currently operate within the community hub, such as Pedal Power, Warm and Toasty, Slimming World and the Walking Group.

### Design Recommendations

- » Incorporate appropriate spaces where community members can participate in physical activity classes, such as a sufficiently sized sports hall, outdoor exercise equipment, bike racks, walking routes into the wider area and storage for equipment.
- » Include facilities where GP patients can access private diagnostic rooms.
- » A comfortable and welcoming waiting room for Hawthorn surgery patients.
- » A screen between the wider waiting room and the reception desk to aid privacy for patients when talking to the surgery staff.
- » A community garden that includes a community growing scheme, seating, and a children's play area.
- » Solar Panels, Low energy Lighting and rainwater harvesting measures.
- » Separated recycling bins and donation bins for clothes.

All feedback will be taken into consideration during the design phase of the building and the development of services.

POWERED BY LEVELLING UP